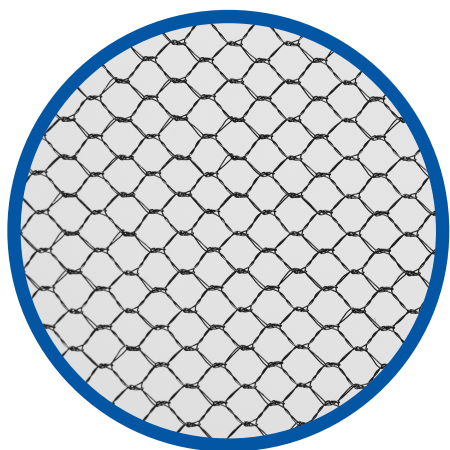




Semplicemente *tulle*

catalogo tessuti

# Tulle Esagonale



Composizione  
Composition 100% nylon 20 td  
100% nylon 20 td

Peso  
Weight 14 g/m<sup>2</sup>  
14 g/m<sup>2</sup>

Finissaggio  
Finishing semirigido  
semi stiff

Settore di utilizzo  
Application area abiti da sposa, bomboniere,  
decorazioni e vetrinistica, veli  
coprisalma  
bride dresses, party favours,  
decorations and window dressing,  
corpse covering veils



[www.st-milano.net](http://www.st-milano.net)  
[commerciale@st-milano.it](mailto:commerciale@st-milano.it)  
+39 02 9341957  
via Morgagni, 5 - Pogliano Milanese (Milano)

Rotolo  
Roll



H x L 150 cm x 100 mt  
H x L 300 cm doppiato  
x 100 mt

cod. TER150 ...  
cod. TER300 ...

Pezza  
Swatch



H x L 300 cm x 50 mt

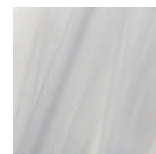
cod. TEP300 ...

\* su richiesta, disponibili formati su misura

Colori  
Colors



09. bianco  
09. white



56. bianco seta  
56. silk white



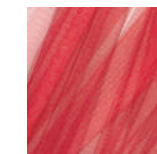
44. panna  
44. cream



36. rosa  
36. pink



40. azalea  
40. azalea



01. rosso  
01. red



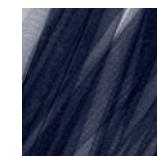
22. giallo sole  
22. sun yellow



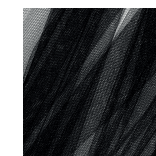
13. verde bandiera  
13. flag green



25. celeste  
25. baby blue



04. blu  
04. blue



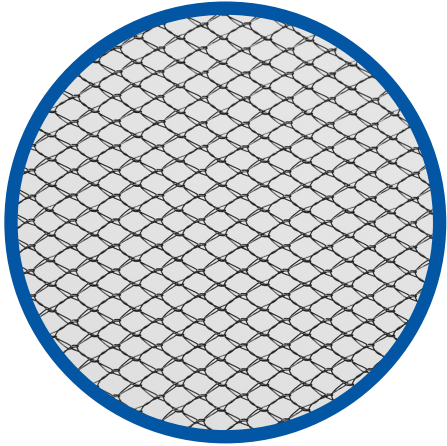
10. nero  
10. black

ATTENZIONE: i colori sono solamente indicativi    WARNING: colors are indicative only

ESAGONALE

tulle

# Tulle Filè



Composizione  
Composition

100% nylon 20 td  
100% nylon 20 td

Peso  
Weight

17 g/m<sup>2</sup>  
17 g/m<sup>2</sup>

Finissaggio  
Finishing

semirigido  
semistiff

Settore di utilizzo  
Application area

abiti da sposa, veli e bomboniere,  
bride dresses, voiles and party  
favours, volume for dance  
clothes



www.st-milano.net  
commerciale@st-milano.it  
+39 02 9341957  
via Morgagni, 5 - Pogliano Milanese (Milano)

Rotolo  
Roll



H x L 150 cm x 100 mt  
H x L 300 cm doppiato  
x 100 mt

cod. TFR150 ...  
cod. TFR300 ...

Pezza  
Swatch



H x L 300 cm x 50 mt

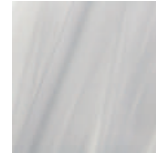
cod. TFP300 ...

\* su richiesta, disponibili formati su misura

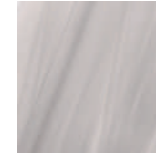
Colori  
Colors



09. bianco  
09. white



56. bianco seta  
56. silk white



57. bianco seta scuro  
57. dark silk white



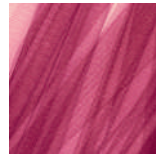
44. panna  
44. cream



48. avorio  
48. ivory



46. ecrù  
31. beige



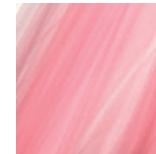
38. porpora  
33. purple



61H. ciclamino  
61H cyclamen



40. azalea  
40. azalea



36. rosa  
36. pink



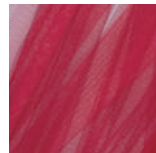
08H. rosa chiaro H  
08H. pale pink H



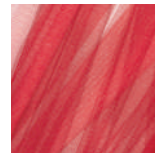
41H. salmone H  
41H. salmon H



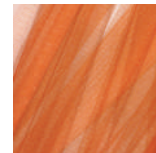
49. cipria  
49. face powder



11H. granata H  
11H. dark red



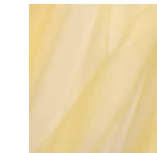
01. rosso  
01. red



31. arancio  
31. orange



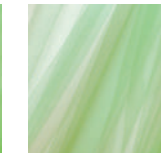
02H. giallo oro H  
02H. gold yellow H



22H. giallo H  
22H. yellow H



20H. verde pastello  
20H. green pastel



33. verde chiaro  
33. pale green



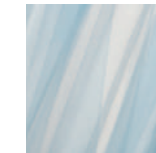
52H. turchese H  
52H. turquoise H



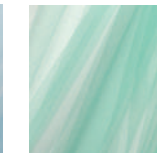
67H. turchese chiaro H  
67H. pale turquoise H



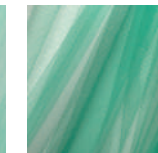
25. celeste  
25. baby blue



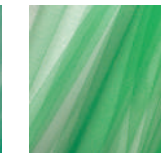
66. celeste baby  
66. baby blue



18. tiffany  
18. tiffany



62H. verde smeraldo H  
62H. emerald green H



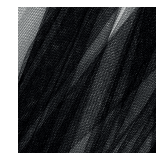
30H. verde erba H  
30H. green grass H



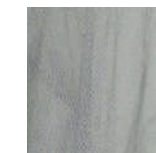
14. blu royal  
14. royal blue



04. blu  
04. blue



10. nero  
10. black



37. grigio perla  
37. pearl grey



27. lilla  
27. lilac



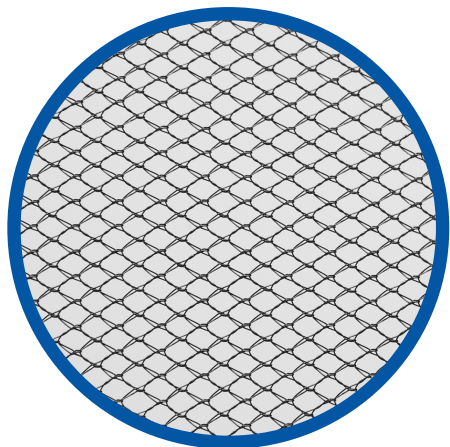
06H. glicine H  
06H. pale lilac H

ATTENZIONE: i colori sono solamente indicativi    WARNING: colors are indicative only

FILE

tulle

# Tulle Filè Mano Morbida



Composizione  
Composition

100% nylon 20 td  
100% nylon 20 td

Peso  
Weight

17 g/m<sup>2</sup>  
17 g/m<sup>2</sup>

Finissaggio  
Finishing

morbido  
soft

Settore di utilizzo  
Application area

abiti da sposa, veli con speciale  
finissaggio morbido  
bride dresses, voile with special  
soft finishing

Rotolo  
Roll



H x L 150 cm x 100 mt  
H x L 300 cm doppiato  
x 100 mt

cod. TFRM150 ...  
cod. TFRM300 ...

Pezza  
Swatch



H x L 300 cm x 50 mt

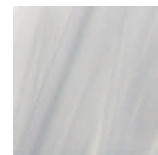
cod. TFPM300 ...

\* su richiesta, disponibili formati su misura

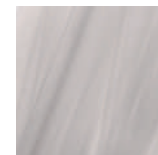
Colori  
Colors



09. bianco  
09. white



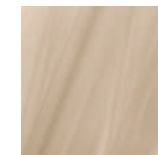
56. bianco seta  
56. silk white



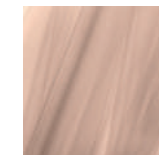
57. bianco seta scuro  
57. dark silk white



44. panna  
44. cream



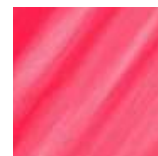
65. carne  
65. skin



49. cipria  
49. face powder



40. azalea  
40. azalea



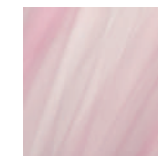
69. rosa fluo  
69. fluo pink



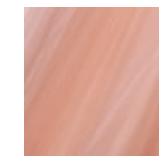
44. giallo fluo  
44. fluo yellow



21. giallo baby  
21. baby yellow



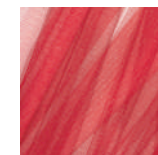
08H. rosa chiaro H  
08H. pale pink H



74. rosa pesca  
74. peach



104. ciliegia  
104. cherry



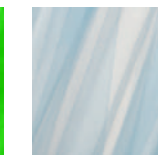
01. rosso  
01. red



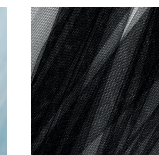
20. verde baby  
20. baby green



70. verde fluo  
70. fluo green



66. celeste baby  
66. baby blue



10. nero  
10. black

ATTENZIONE: i colori sono solamente indicativi    WARNING: colors are indicative only

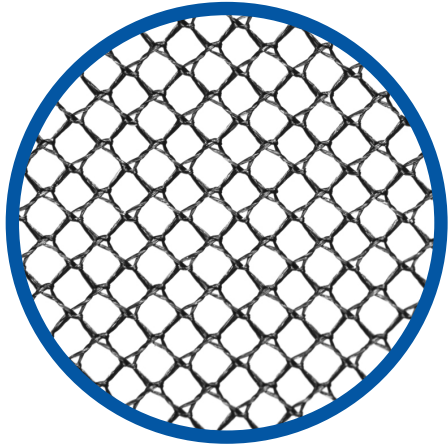


www.st-milano.net  
commerciale@st-milano.it  
+39 02 9341957  
via Morgagni, 5 - Pogliano Milanese (Milano)

FILÈ MANO MORBIDA

tulle

# Tulle Filè 40



Rotolo  
Roll



H x L 300 cm doppiato  
x 100 mt  
H x L 150 cm x 100 mt

cod. TF40R300 ...

cod. TF40R150 ...

Pezza  
Swatch



H x L 300 cm x 50 mt

cod. TF40P300 ...

\* su richiesta, disponibili formati su misura

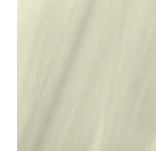
Colori  
Colors



09. bianco  
09. white



56. bianco seta  
56. silk white



44. panna  
44. cream



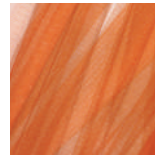
41H. salmone H  
41H. salmon H



08H. rosa chiaro H  
08H. pale pink H



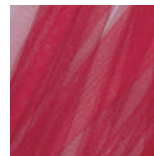
36. rosa  
36. pink



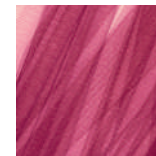
31. arancio  
31. orange



01. rosso  
01. red



11H. granata H  
11H. dark red



38. porpora  
33. purple



61H. ciclamino  
61H cyclamen



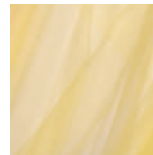
40. azalea  
40. azalea



42. rosè  
42. rosè



02H. giallo oro H  
02H. gold yellow H



22H. giallo H  
22H. yellow H



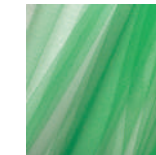
33. verde chiaro  
33. pale green



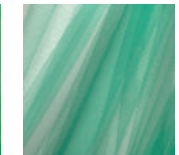
20H. verde pastello  
20H. green pastel



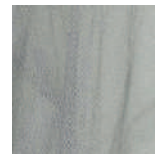
51. verde cipro  
51. cyprus green



30H. verde erba H  
30H. green grass H



62H. verde smeraldo H  
62H. emerald green H



37. grigio perla  
37. pearl grey



66. celeste baby  
66. baby blue



25. celeste  
25. baby blue



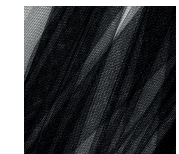
52H. turchese H  
52H. turquoise H



14. blu royal  
14. royal blue



04. blu  
04. blue



10. nero  
10. black



27. lilla  
27. lilac



06H. glicine H  
06H. pale lilac H



06Hbis. glicine H bis  
06Hbis. pale lilac H bis

Composizione  
Composition

100% nylon 40 td  
100% nylon 40 td

Peso  
Weight

25 g/m<sup>2</sup>  
25 g/m<sup>2</sup>

Finissaggio  
Finishing

rigido  
stiff

Settore di utilizzo  
Application area

sottogonne abiti da sposa, tutù e  
abiti da danza, fioristi e confezio-  
namento fiocchi nascita  
underskirt bride dresses, tutu and  
dance clothes, florists and birth  
bows packaging



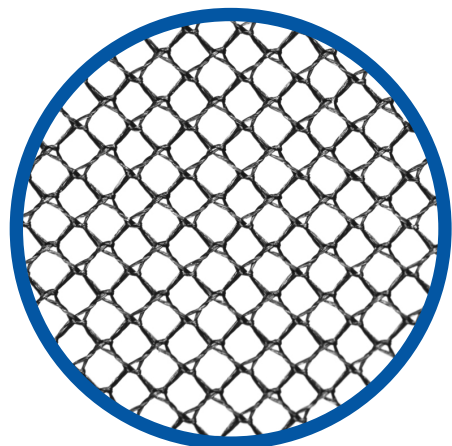
www.st-milano.net  
commerciale@st-milano.it  
+39 02 9341957  
via Morgagni, 5 - Pogliano Milanese (Milano)

ATTENZIONE: i colori sono solamente indicativi WARNING: colors are indicative only

FILE 40

tulle

# Tulle Filè 40 formaldeide free



Rotolo  
Roll



H x L 150 cm x 100 mt  
H x L 300 cm doppiato  
x 100 mt

cod. TF40RZF150 ...  
cod. TF40RZF300 ...

Pezza  
Swatch

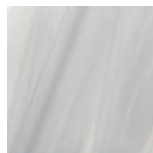


H x L 300 cm x 50 mt

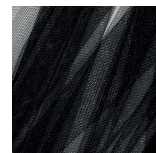
cod. TF40PZF300 ...

\* su richiesta, disponibili formati su misura

Colori  
Colors



56. bianco seta  
56. silk white



10. nero  
10. black

\* su richiesta, disponibili tutti i colori

ATTENZIONE: i colori sono solamente indicativi    WARNING: colors are indicative only

Composizione  
Composition

100% nylon 40 td  
100% nylon 40 td

Peso  
Weight

25 g/m<sup>2</sup>  
25 g/m<sup>2</sup>

Finissaggio  
Finishing

rigido - zero formaldeide  
stiff - formaldeide free

Settore di utilizzo  
Application area

abiti da sposa, volume per abiti  
bimbi  
bride dresses, volume for  
children's clothes

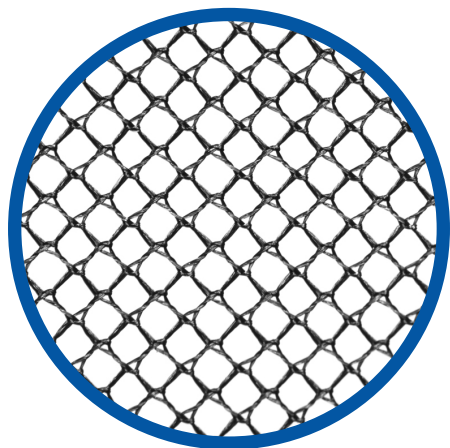


[www.st-milano.net](http://www.st-milano.net)  
[commerciale@st-milano.it](mailto:commerciale@st-milano.it)  
+39 02 9341957  
via Morgagni, 5 - Pogliano Milanese (Milano)

FILÈ 40 FORMALDEIDE FREE

tulle

# Filè lucido



Composizione  
Composition

100% nylon trilobato 20 td  
100% nylon trilobato 20 td

Peso  
Weight

14 g/m<sup>2</sup>  
14 g/m<sup>2</sup>

Finissaggio  
Finishing

rigido  
stiff

Settore di utilizzo  
Application area

abiti, veli e bomboniere, volume  
per abiti danza  
dresses, veils and party favours,  
volume for dance clothes

Rotolo  
Roll



H x L 300 cm x 100 mt  
H x L 150 cm x 100 mt

cod. TFLXR300 ...  
cod. TFLXR150 ...

Pezza  
Swatch



H x L 300 cm x 50 mt

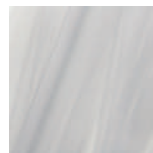
cod. TFLXP300 ...

\* su richiesta, disponibili formati su misura

Colori  
Colors



09. bianco  
09. white



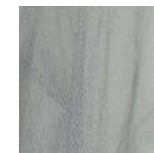
56. bianco seta  
56. silk white



44. panna  
44. cream



98. oro  
98. gold



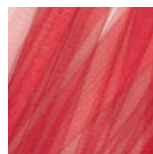
99. argento  
99. silver



25. celeste  
25. baby blue



36. rosa  
36. pink



01. rosso  
01. red

ATTENZIONE: i colori sono solamente indicativi    WARNING: colors are indicative only

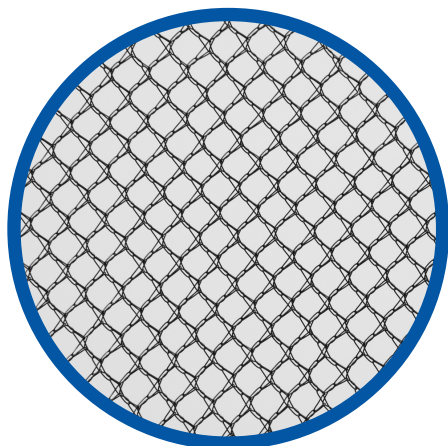


www.st-milano.net  
commerciale@st-milano.it  
+39 02 9341957  
via Morgagni, 5 - Pogliano Milanese (Milano)

FILÈ LUCIDO

tulle

# Tulle Alfa-Beta



Composizione  
Composition 100% nylon 20 td  
100% nylon 20 td

Peso  
Weight 14 g/m<sup>2</sup>  
14 g/m<sup>2</sup>

Finissaggio  
Finishing rigido  
stiff

Settore di utilizzo  
Application area decorazioni sottotorta, veli copri-  
salma  
undercake decorations, corpse  
covering veils



[www.st-milano.net](http://www.st-milano.net)  
[commerciale@st-milano.it](mailto:commerciale@st-milano.it)  
+39 02 9341957  
via Morgagni, 5 - Pogliano Milanese (Milano)

Rotolo  
Roll



rotoli industriali  
industrial rolls

L 500 mt ca  
H 90/100/120 cm

cod. TB ...

Colori  
Colors



09. bianco  
09. white



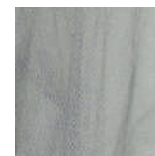
48. avorio  
48. ivory



94. champagne  
94. champagne



46. ecrù  
31. beige



37. grigio perla  
37. pearl grey

\* su richiesta, disponibili tutti i colori

ATTENZIONE: i colori sono solamente indicativi WARNING: colors are indicative only

Nastro  
Ribbon



H x L 60 mm x 200 mt

cod. TAB06 ...

Colori  
Colors



09. bianco  
09. white

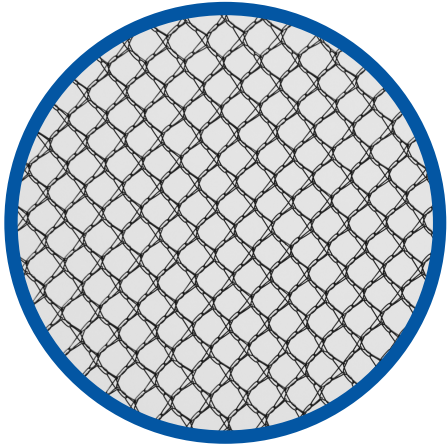
ATTENZIONE: i colori sono solamente indicativi WARNING: colors are indicative only

ALFA-BETA

tulle



# Tulle Beta 20



Composizione  
Composition **100% nylon 20 td**  
100% nylon 20 td

Peso  
Weight **16,5 g/m<sup>2</sup>**  
16,5 g/m<sup>2</sup>

Finissaggio  
Finishing **rigido**  
stiff

Settore di utilizzo  
Application area **packaging e fioristi**  
packaging and florists



[www.st-milano.net](http://www.st-milano.net)  
[commerciale@st-milano.it](mailto:commerciale@st-milano.it)  
+39 02 9341957  
via Morgagni, 5 - Pogliano Milanese (Milano)

Rotolo  
Roll

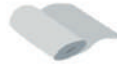


H x L **300 cm doppiato**  
**x 100 mt**  
H x L **150 cm x 100 mt**

cod. TBR300 ...

cod. TBR150 ...

Pezza  
Swatch



H x L **300 cm x 50 mt**

cod. TBP300 ...

\* su richiesta, disponibili formati su misura

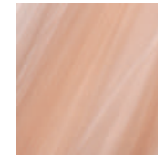
Colori  
Colors



09. bianco  
09. white



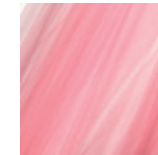
44. panna  
44. cream



41. salmone  
41. salmon



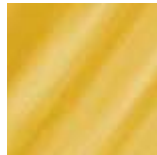
42. rosè  
42. rosé



36. rosa  
36. pink



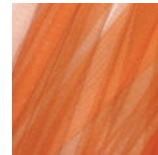
40. azalea  
40. azalea



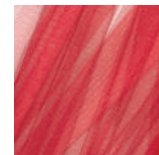
22. giallo sole  
22. sun yellow



02. giallo oro  
02. gold yellow



31. arancio  
31. orange



01. rosso  
01. red



11. bordeaux  
11. burgundy



45. marrone  
45. brown



18. tiffany  
18. tiffany



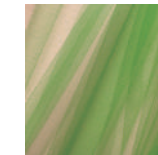
33. verde chiaro  
33. pale green



13. verde bandiera  
13. flag green



51. verde cipro  
51. cyprus green



47. verde marcio  
47. bad green



43. verdone  
43. dark green



25. celeste  
25. baby blue



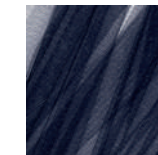
05. azzurro  
05. pale blue



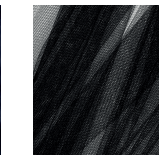
52. turchese  
52. turquoise



14. blu royal  
14. royal blue



04. blu  
04. blue



10. nero  
10. black



07. viola  
07. purple



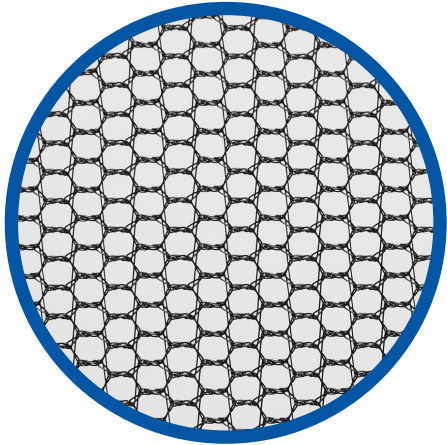
27. lilla  
27. lilac

ATTENZIONE: i colori sono solamente indicativi    WARNING: colors are indicative only

BETA 20

tulle

# Tulle Piuma leggero



Composizione  
Composition 100% nylon 20 td  
100% nylon 20 td

Peso  
Weight 25 g/m<sup>2</sup>  
25 g/m<sup>2</sup>

Finissaggio  
Finishing morbido  
soft

Settore di utilizzo  
Application area ricamo e volumi eleganti  
embroidery and elegant volumes



www.st-milano.net  
commerciale@st-milano.it  
+39 02 9341957  
via Morgagni, 5 - Pogliano Milanese (Milano)

Rotolo  
Roll



H x L 150 cm x 100 mt  
H x L 300 cm doppiato  
x 100 mt

cod. TPL150 ...  
cod. TPL300 ...

Pezza  
Swatch



H x L 300 cm x 50 mt

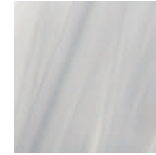
cod. TPLP300 ...

\* su richiesta, disponibili formati su misura

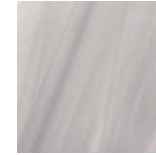
Colori  
Colors



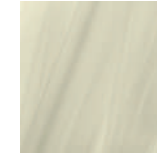
09. bianco  
09. white



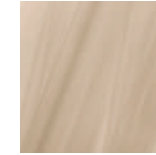
56. bianco seta  
56. silk white



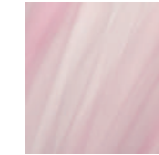
57. bianco seta scuro  
57. dark silk white



44. panna  
44. cream



65. carne  
65. skin



08H. rosa chiaro H  
08H. pale pink H



44. giallo fluo  
44. fluo yellow



21. giallo baby  
21. baby yellow



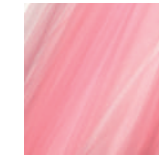
95D. giallo chiaro  
95d. light yellow



01. rosso  
01. red



53D. corallo  
53D. coral



36. rosa  
36. pink



66. celeste baby  
66. baby blue



27D. lilla D  
27D. lilac D



96D. geranio  
96D. geranium



12D. fuxia  
12D. fuxia



69. rosa fluo  
69. fluo pink



40. azalea  
40. azalea



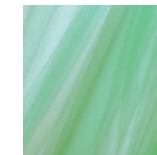
67D. turchese  
67D. turquoise



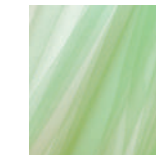
04. blu  
04. blue



70. verde fluo  
70. fluo green



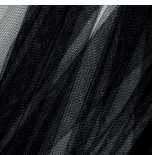
88D. verde acqua  
88D. teal



20. verde baby  
20. baby green



102D. verde mela  
102D. apple green



10. nero  
10. black

ATTENZIONE: i colori sono solamente indicativi WARNING: colors are indicative only

PIUMA LEGGERO

tulle

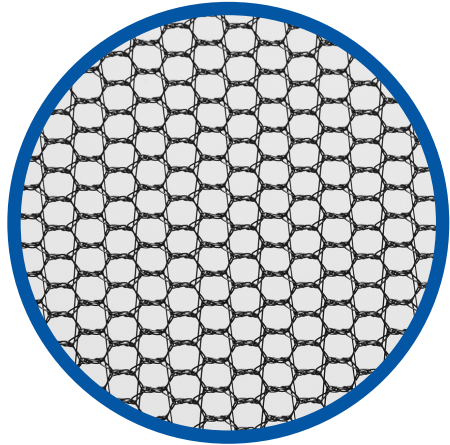
# Tulle Piuma pesante

Rotolo  
Roll



H x L 150 cm x 100 mt

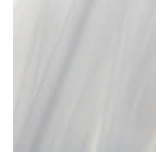
cod. TPP150 ...



Colori  
Colors



09. bianco  
09. white



56. bianco seta  
56. silk white



44. panna  
44. cream

Composizione  
Composition 100% nylon 40 td  
100% nylon 40 td

Peso  
Weight 50 g/m<sup>2</sup>  
50 g/m<sup>2</sup>

Finissaggio  
Finishing morbido  
soft

Settore di utilizzo  
Application area ricamo  
embroidery

ATTENZIONE: i colori sono solamente indicativi    WARNING: colors are indicative only

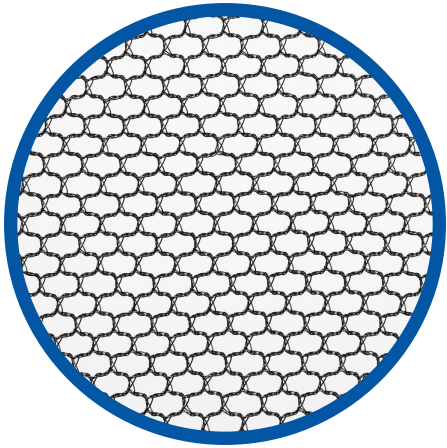


[www.st-milano.net](http://www.st-milano.net)  
[commerciale@st-milano.it](mailto:commerciale@st-milano.it)  
+39 02 9341957  
via Morgagni, 5 - Pogliano Milanese (Milano)

PIUMA PESANTE

tulle

# Tulle Illusione



Composizione  
Composition **100% nylon 15 td**  
100% nylon 15 td

Peso  
Weight **17 g/m<sup>2</sup>**  
17 g/m<sup>2</sup>

Finissaggio  
Finishing **morbido**  
soft

Settore di utilizzo  
Application area **ricamo, volumi gonne, abiti sposa e alta moda**  
embroidery, skirts' columes, bride dresses and high fashion industry



[www.st-milano.net](http://www.st-milano.net)  
[commerciale@st-milano.it](mailto:commerciale@st-milano.it)  
+39 02 9341957  
via Morgagni, 5 - Pogliano Milanese (Milano)

Rotolo  
Roll



H x L 150 cm x 50 mt  
H x L 300 cm doppiato x 50 mt

cod. T1150 ...  
cod. T1300 ...

\* su richiesta, disponibili formati su misura

Colori  
Colors



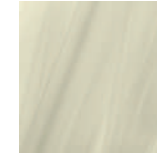
09. bianco  
09. white



56. bianco seta  
56. silk white



116. cremino  
116. baby cream



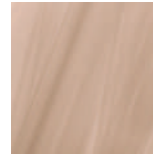
44. panna  
44. cream



48. avorio  
48. ivory



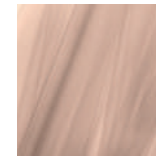
65. carne  
65. skin



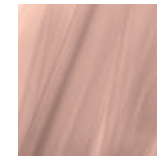
92. creta  
92. clay



71. nudo  
71. nude



86. rosa antico  
86. vintage pink



79. rosa antico scuro  
79. dark vintage pink



36. rosa  
36. pink



01. rosso  
01. red



05. azzurro  
05. light blue



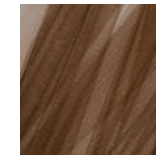
77. blu notte  
77. dark blue



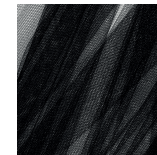
39. lavanda  
39. lavender



58. melanzana  
58. aubergine



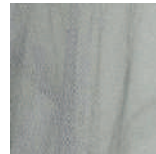
90. testa di moro  
90. dark brown



10. nero  
10. black



103. grigio chiaro  
103. light grey



37. grigio  
37. grey

ATTENZIONE: i colori sono solamente indicativi    WARNING: colors are indicative only

ILLUSIONE

tulle

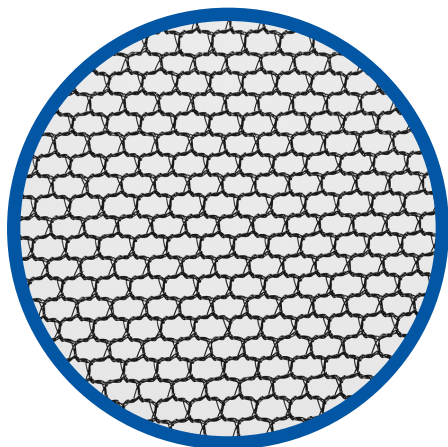
# Tulle Powernet

Rotolo  
Roll



H x L 150 cm x 100 mt

cod. TPNETR150 ...



\* su richiesta, disponibili formati su misura

Composizione  
Composition

100% nylon 20 td  
100% nylon 20 td

Peso  
Weight

25 g/m<sup>2</sup>  
25 g/m<sup>2</sup>

Finissaggio  
Finishing

morbido  
soft

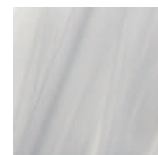
Settore di utilizzo  
Application area

ricamo e volumi di gonne  
embroidery and skirts' volumes

Colori  
Colors



09. bianco  
09. white



56. bianco seta  
56. silk white



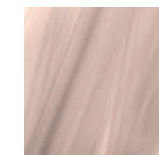
44. panna  
44. cream



65. carne  
65. skin



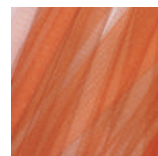
48. avorio  
48. ivory



71. nudo  
71. nude



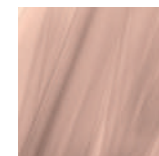
11. bordeaux  
11. burgundy



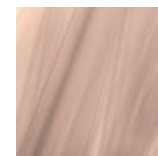
112. terra di siena  
112. siena's land



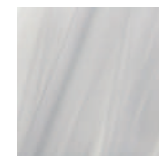
109. bisquit  
109. bisquit



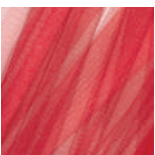
110. phard  
110. phard



86. rosa antico  
86. vintage pink



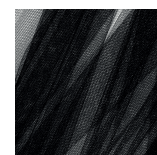
107. brina  
107. frost



01. rosso  
01. red



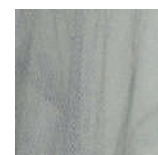
90. testa di moro  
90. dark brown



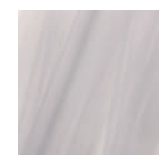
10. nero  
10. black



91. piombo  
91. lead



37. grigio perla  
37. pearl grey



103. grigio chiaro  
103. light grey



40. azalea  
40. azalea



108. dolomite  
108. dolomite



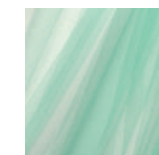
77. blu notte  
77. dark blue



111. cielo  
111. sky



105. lime  
105. lime



106. menta  
106. mint



73. cobalto  
73. cobalt blue



www.st-milano.net  
commerciale@st-milano.it  
+39 02 9341957  
via Morgagni, 5 - Pogliano Milanese (Milano)

ATTENZIONE: i colori sono solamente indicativi WARNING: colors are indicative only

POWERNET

tulle

# Tulle Matera bielastico

Rotolo  
Roll



H x L 150 cm x 60 mt

cod. TMATERA150 ...

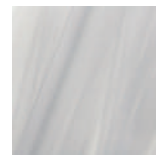


\* su richiesta, disponibili formati su misura

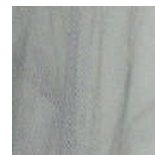
Colori  
Colors



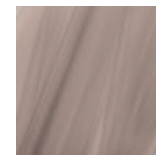
09. bianco  
09. white



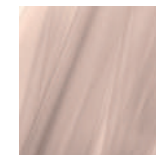
56. bianco seta  
56. silk white



37. grigio perla  
37. pearl grey



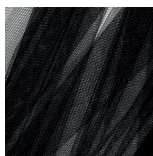
114. tortora  
114. taupe



71. nudo  
71. nude



44. panna  
44. cream



10. nero  
10. black

Composizione  
Composition

93% nylon - 7% elasthan  
93% nylon - 7% elasthan

Peso  
Weight

65 g/m<sup>2</sup>  
65 g/m<sup>2</sup>

Finissaggio  
Finishing

morbido  
soft

Settore di utilizzo  
Application area

ricamo, prêt-à-porter per inserti  
maniche e body danza  
embroidery, prêt-à-porter for  
sleeves' inserts and dance body-  
suits



ATTENZIONE: i colori sono solamente indicativi    WARNING: colors are indicative only



[www.st-milano.net](http://www.st-milano.net)  
[commerciale@st-milano.it](mailto:commerciale@st-milano.it)  
+39 02 9341957  
via Morgagni, 5 - Pogliano Milanese (Milano)

MATERA BI ELASTICO

tulle

# Tulle Powernet elastico leggero

Rotolo  
Roll



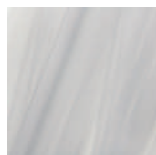
H x L 150 cm x 50 mt

cod. TPEL150 ...

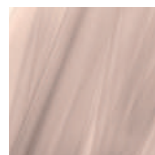


\* su richiesta, disponibili formati su misura

Colori  
Colors



56. bianco seta  
56. silk white



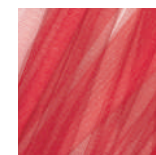
71. nudo  
71. nude



65. carne  
65. skin



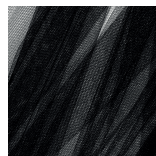
90. testa di moro  
90. dark brown



01. rosso  
01. red



07. viola  
07. purple



10. nero  
10. black

Composizione  
Composition

84% nylon - 16% elasthan  
84% nylon - 16% elasthan

Peso  
Weight

40 g/m<sup>2</sup>  
40 g/m<sup>2</sup>

Finissaggio  
Finishing

morbido  
soft

Settore di utilizzo  
Application area

ricamo, prêt-à-porter per inserti  
maniche e body danza  
embroidery, prêt-à-porter for  
sleeves' inserts and dance body-  
suits

ATTENZIONE: i colori sono solamente indicativi    WARNING: colors are indicative only

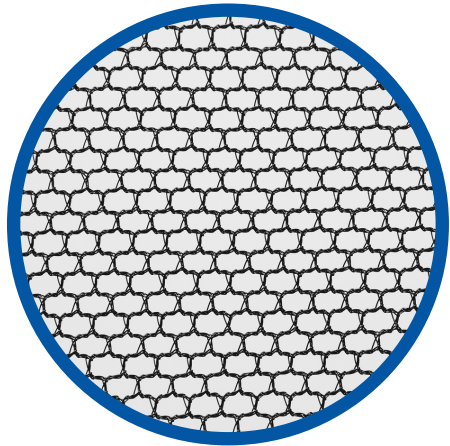


[www.st-milano.net](http://www.st-milano.net)  
[commerciale@st-milano.it](mailto:commerciale@st-milano.it)  
+39 02 9341957  
via Morgagni, 5 - Pogliano Milanese (Milano)

tulle

POWERNET ELASTICO LEGGERO

# Tulle Powernet riciclato



Composizione  
Composition

85% PA Recycled - 15% PA  
85% PA Recycled - 15% PA

Peso  
Weight

40 g/m<sup>2</sup>  
40 g/m<sup>2</sup>

Finissaggio  
Finishing

morbido  
soft

Settore di utilizzo  
Application area

ricamo e volumi di gonne  
embroidery and skirts' volumes

Rotolo  
Roll

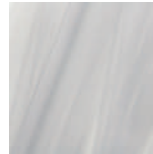


H x L 150 cm x 50 mt

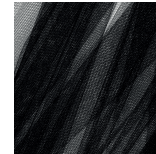
cod. TPRECY150 ...

\* su richiesta, disponibili formati su misura

Colori  
Colors



56. bianco seta  
56. silk white



10. nero  
10. black

ATTENZIONE: i colori sono solamente indicativi    WARNING: colors are indicative only



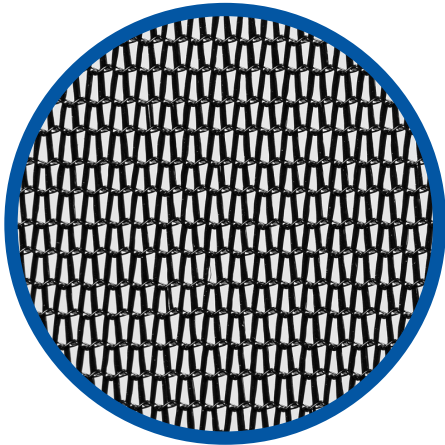
[www.st-milano.net](http://www.st-milano.net)  
[commerciale@st-milano.it](mailto:commerciale@st-milano.it)  
+39 02 9341957  
via Morgagni, 5 - Pogliano Milanese (Milano)

POWERNET RICICLATO

tulle



# Velo SG



Rotolo  
Roll



H x L 180 cm x 50 mt

cod. VSGR180 ...

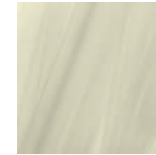
Colori  
Colors



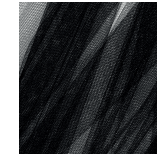
09. bianco  
09. white



56. bianco seta  
56. silk white



44. panna  
44. cream



10. nero  
10. black

ATTENZIONE: i colori sono solamente indicativi    WARNING: colors are indicative only

Composizione  
Composition

100% nylon 40/20 td  
100% nylon 40/20 td

Peso  
Weight

50 g/m<sup>2</sup>  
50 g/m<sup>2</sup>

Finissaggio  
Finishing

rigido  
stiff

Settore di utilizzo  
Application area

sottogonne abiti da sposa, abbigliamento, decorazioni sottotorta e giotorta  
underskirt bride dresses, clothes, undercake decorations and dress-cake

Nastro  
Ribbon



H x L 44 mm x 200 mt  
H x L 50 mm x 200 mt

cod. VSG44 ...  
cod. VSG50 ...

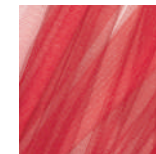
Colori  
Colors



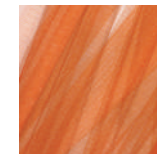
09. bianco  
09. white



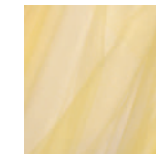
36. rosa  
36. pink



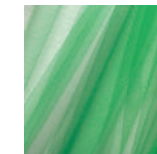
01. rosso  
01. red



31. arancio  
31. orange



44. giallo  
44. yellow



13. verde bandiera  
13. flag green



27. lilla  
27. lilac



14. blu royal  
14. royal blue



25. celeste  
25. baby blue

ATTENZIONE: i colori sono solamente indicativi    WARNING: colors are indicative only

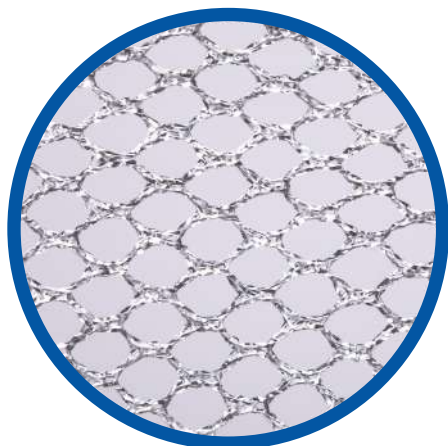


www.st-milano.net  
commerciale@st-milano.it  
+39 02 9341957  
via Morgagni, 5 - Pogliano Milanese (Milano)

VELO SG

tessuto

# Rete Lurex



Composizione  
Composition

54% poliestere, 46% nylon  
54% polyester, 46% nylon

Peso  
Weight

30 g/m<sup>2</sup>  
30 g/m<sup>2</sup>

Finissaggio  
Finishing

rigido  
stiff

Settore di utilizzo  
Application area

packaging con effetti luminosi  
ed eleganti  
packaging with bright and  
elegant effect

Rotolo  
Roll



H x L 150 cm x 20 mt

cod. RLX150 ...

Pezza  
Swatch



H x L 150 cm x 5/10 mt

cod. RLXP150 ...

Nastro  
Ribbon



H x L qualsiasi misura x 20 mt

cod. RLX ...

\* su richiesta, disponibili formati su misura

Colori  
Colors



99. argento  
99. silver



98. oro  
98. gold

ATTENZIONE: i colori sono solamente indicativi    WARNING: colors are indicative only



[www.st-milano.net](http://www.st-milano.net)  
[commerciale@st-milano.it](mailto:commerciale@st-milano.it)  
+39 02 9341957  
via Morgagni, 5 - Pogliano Milanese (Milano)

LUREX

rete

# Tulle Point Esprit



Rotolo  
Roll

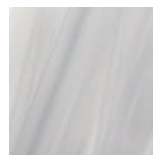


H x L 150 cm x 50 mt

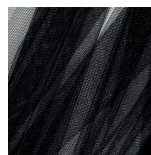
cod. TPESPRIT150 ...

\* su richiesta, disponibili formati su misura

Colori  
Colors



56. bianco seta  
56. silk white



10. nero  
10. black

ATTENZIONE: i colori sono solamente indicativi    WARNING: colors are indicative only

Composizione  
Composition **100% poliestere**  
100% polyester

Peso  
Weight **27 g/m<sup>2</sup>**  
27 g/m<sup>2</sup>

Finissaggio  
Finishing **morbido**  
soft

Settore di utilizzo  
Application area **abbigliamento**  
clothing



[www.st-milano.net](http://www.st-milano.net)  
[commerciale@st-milano.it](mailto:commerciale@st-milano.it)  
+39 02 9341957  
via Morgagni, 5 - Pogliano Milanese (Milano)

POINT ESPRIT

tulle



## ST-Milano di Sergio Tosana

[www.st-milano.net](http://www.st-milano.net)

[commerciale@st-milano.it](mailto:commerciale@st-milano.it)

+39 02 9341957

via Morgagni, 5 - Pogliano Milanese (Mi)

p.iva IT06277580962

N. REA MI-1882577